





SIGN	DATE	DESCRIPTION	APPROVER

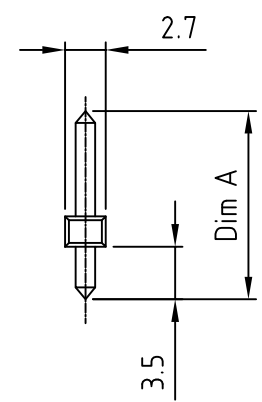
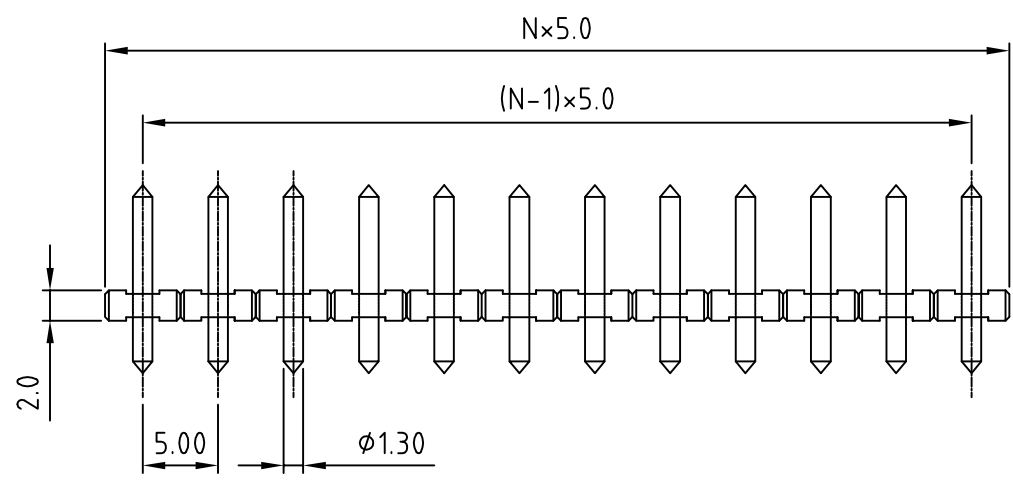
THIS IS CAD DRAWING, DO NOT REVISE MANUALLY!!!

- Material:
- Solid PIN: Brass(CuZn)
 - Surface of solder tail: Tin plated
 - Insulator(housing): Thermoplastic (UL94V-0)

- Electrical:
- | | | | | |
|--------------------------|---|-------|-------|-------|
| | UL | CSA | VDE | TUV |
| ● Voltage rating: | 300V | 300V | 300V | 300V |
| ● Current rating: | 10A | 10A | 12A | 15A |
| ● Withstanding Voltage: | 1.6KV | 1.6KV | 2.5KV | 2.5KV |
| ● Operating temperature: | -30°C to +105°C | | | |
| ● Soldering temperature: | 250°C±10°C/5 Sec | | | |
| ● Safety Approval: |     | | | |
- RoHS Compliant



N = Number of contact



PART NUMBER:

OSTOPXX0000

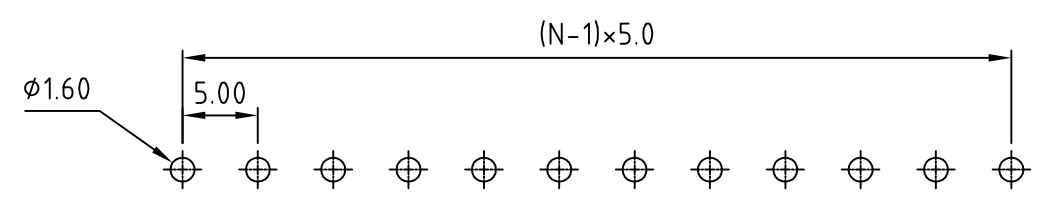
No. of Poles
 02: Poles

 24: Poles

- Dim A Length
- 0 12.5mm (φ1.3 - (Standard)
 - 1 13.0mm (Upφ1.3 Downφ1.0)
 - 2 12.5mm(Upφ1.3 Downφ1.0)
 - 3 11.5mm(φ1.3)
 - 4 14.2mm(φ1.3)
 - 5 17.5mm(φ1.3)
 - 6 20.0mm(φ1.3)
 - 7 18.0mm(Upφ1.3 Downφ1.0)
 - 8 16.2mm(Upφ1.3 Downφ1.0)
 - 9 16.5mm(φ1.3)
 - A 21.0mm(φ1.1)
 - B 10.0mm(φ1.0)
 - C 12.7mm(φ1.1)
 - D 16.3mm(φ1.1)
 - F 12.5x8.8mm Bent pin (φ1.3)

non-standard may require MOQ

P.C.B. LAYOUT



THESE DRAWINGS AND SPECIFICATIONS ARE THE PROPERTY OF ON-SHORE TECHNOLOGY, INC. AND SHALL NOT BE REPRODUCED, COPIED OR USED IN ANY MANNER WITHOUT THE PRIOR WRITTEN CONSENT OF ON-SHORE TECHNOLOGY, INC.



TITLE		OSTOP 5.0mm Series 2p-24p			
PART NO.		OSTOPXX0000		DWG NO. OSTOPXX0000.DWG	
APPROVED	CHECKED	DESIGNED	DRAWN	CUST NO.	
Shi Jun 2006.10.30	Shi Jun 2006.10.30	Tony 2006.10.30	Tony 2006.10.30		
				Tolerance	
				X.	±0.50
				X.X	±0.30
				X.XX	±0.10
				X°	±1°
				UNIT: mm	
				SCALE: NONE	
				REV.: D	
				SHEET: 01/01	